

SERIE TOUCH

**COMMERCIAL SCALES
WITH TOUCH SCREEN**

**TPV SCALES
TICKET**



EN

www.baxtran.com



S70 MEDIUM RANGE

- > INTUITIVE AND QUICK
- > INTERCONNECTABLE

MORE THAN 25.000 PLU IN MEMORY
MORE 80 DIRECT PLU ON SCREEN
10 DIRECT SELLERS



HIGH PRINTING SPEED

- 130 mm/seg
- Printing resolution: 230 dpi
- Paper width: 57 mm
- Printing width: 48 mm

FAST ACCESS AND FACILITY

to change the paper of the printer

TICKET ACCORDING TO REGULATION
of simplified invoice



- > Scale with ticket
- > Intelligent battery saving
- > Connectivity with multiple peripheral
- > Data transmission to PC
- > Image synchronization, PLU's and taxes
- > Up to 32 interconnected equipment

- > Different types of discounts to apply
- > Multi-payment: in cash or by card
- > Operating in €/kg, €/100g, €/250g o €/unit.
- > Ticket printing
- > Simplified invoices
- > Ticket customization
- > Statistics

TPV SCALES

S70

WE PROVIDE THE BEST TECHNOLOGY
FOR YOUR ESTABLISHMENTS

MEDIUM RANGE MODEL INTERCONNECTED

FEATURES:

- ABS House.
- Plate in stainless steel.
- Dimensions of the plate 370x240 mm.
- 1 display seller of 8" touchscreen
- 1 display buyer of 7".
- High resolution LCD Display of 800 x 480 pixels.
- Removable column (it is delivered with column)
- Multi language
- Bubble level.
- Excitation to net with adapter AC/DC 100-240Vac 50-60Hz.
- Internal rechargeable battery 12V/10Ah which functions when there is a power failure.
- More than 80 direct PLU's, 99.999 PLU's in memory.
- Working temperature: -10°C to + 40° C.
- Printing resolution 203 dpi
- Printing speed 130 mm/s
- EC model approval with series verification.



BACK OFFICE MANAGEMENT SOFTWARE



- > Manual or automatic accumulation
- > Tare
- > Zero
- > Complete operation of cash register (discounts in percentage and direct Price, modes of payment and its combination, free prize) to be configured by the role of the administrator.

- > 2x USB2.0
- > RS232 for printer / labeller
- > RS232 for PC
- > 1x RJ11 for the cash register
- > 1x RJ45 for Ethernet and floating sellers.
- > Software Back office

M80 TOP RANGE

- > SOLUTIONS FOR BIG AREAS AND SUPERMARKETS
- > INTEGRATED BAR CODE READER AND PRINTER

MORE THAN 25.000 PLU
IN MEMORY
MORE THAN 80 DIRECT PLU
ON SCREEN
10 DIRECT SELLERS



BACK OFFICE MANAGEMENT SOFTWARE



- > Screens of 10"
- > Quick ticket printing
- > Integrated bar code reader
- > Interactive screen of the buyer
- > Simplified invoices
- > Ticket personalization
- > Embedded Linux Operating system

- > Interconnected up to 32 equipment (master - slave)
- > Floating seller System
- > Different types of discounts to apply
- > Multi-payment: in cash and by card
- > Operational in €/kg, €/100g, €/250g o €/units.
- > Statistics

DESCRIPTION

TPV SCALES

M80

WE ACHIEVE THE BEST TECHNOLOGY FOR
YOUR ESTABLISHMENTS

**INTERCONNECTABLE
RANGE MODEL**



FEATURES:

- ABS House.
- Plate in stainless steel.
- Dimensions of the plate 385x280 mm.
- 1 display seller of 10" touchscreen.
- 1 display buyer of 10" interactive.
- High definition Display of 1280 x 800 pixels.

- Bubble level.
- Excitation to net with adapter AC/DC 100-240Vac 50-60Hz.
- Internal rechargeable battery 12V/10Ah which functions when there is a power failure.
- Working temperature: -10°C a + 40° C.
- EC model approval with series verification.

**QUICK PRINTER OF THE TICKET INTEGRATED IN THE UPPER SIDE
DEVICE WITH BAR CODE READER
LARGE TOUCH SCREEN
ADVERTISEMENT SETTINGS MENU IN THE SCREEN OF THE CUSTOMER**

SOFTWARE SERIE TOUCH

- 1 PERSONALIZATION**
OF TICKETS AND LABELS
- 2 IMPLEMENTATION OF THE PRICES**
SEND TO EVERY SCALE OR TO THE MASTER OF THE SHOP
- 3 SEND FILES TO THE MACHINE**
IMAGES OF PRODUCTS AND OTHER DATA
- 4 MANIPULATION AND USER'S INTERFACE**
OF THE SCREEN DIRECTLY IN THE PC
- 5 MANIPULATION OF ALL THE STAGES OF THE SCALE**
DEPARTMENT, PRODUCT, CATEGORY, OPERATOR
- 6 COPY OF SECURITY**
IMPORT FROM THE MACHINE OR EXPORT TO THE MACHINE



THE MENUS OF YOUR SCALE IN THE COMPUTER

Manage all the scales from your PC. All the parameters and menus are available for your management.

CHANGE OF DATA OF THE CENTRALIZED PRODUCTS

It allows a total control of the management of prices, discounts and images of the products. Send data via scale or shop. Possibility to work with a master system scale.

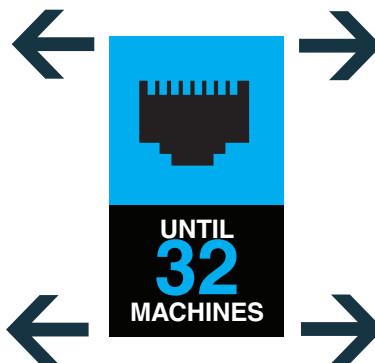
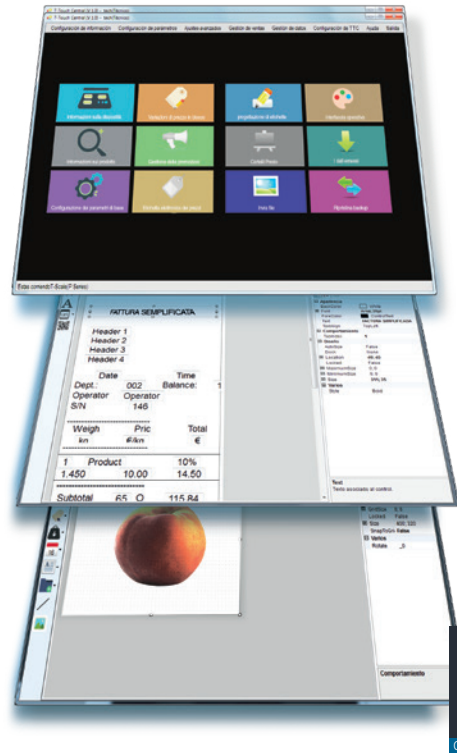
QUICK INTERFACE FOR A BETTER EXPERIENCE OF THE CUSTOMER

Personalized screens to prepare the screen of the seller and optimize day to day. Sending images from PC.

DO YOUR OWN SECURITY COPIES

Software gives you the possibility to do your own security copies.

SOFTWARE



INTERCONNECTIVITY
BETWEEN THE DIFFERENT DEVICES OF
THE BAXTRAN TOUCHSCREEN SERIES





S70

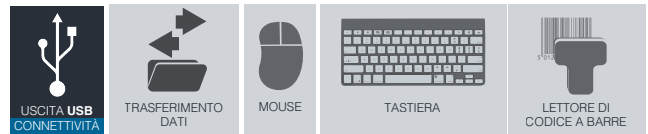
| Code # | System | Column | Capacity (kg) | Readout (g) | Pan dimensions (mm) | Scale dimensions (m) |
|--------|--------|--------|---------------|-------------|---------------------|----------------------|
| 260846 | Linux | • | 6/15 | 2/5 | 370 x 240 | 375 x 395 x 110 |
| 260847 | Linux | • | 15/30 | 5/10 | 370 x 240 | 375 x 395 x 110 |

M80

| Code # | System | Column | Capacity (kg) | Readout (g) | Pan dimensions (mm) | Scale dimensions (m) |
|--------|--------|--------|---------------|-------------|---------------------|----------------------|
| 260840 | Linux | • | 6/15 | 2/5 | 380 x 280 | 350 x 380 x 530 |
| 260841 | Linux | • | 15/30 | 5/10 | 380 x 280 | 350 x 380 x 530 |

ACCESORIES

COMPLEMENT YOUR SCALES
WITH THE DESIRED PERIPHERALS



Keyboard USB

FEATURES:

- USB input.



| Code # | Description |
|--------|--------------|
| 580239 | Keyboard USB |

Bar code scanner SCANBC

FEATURES:

- Bar code scanner compatible with Baxtran touch scales and indicators.
- USB entrance.
- ABS house.
- EC approval



| Code # | Description |
|--------|------------------|
| 910049 | Bar code scanner |

Cash drawer CD410

FEATURES:

- Metal cash drawer
- To be connected to any type of scale choose the option drawer.(*)
- 6V output.
- RJ11 connector (telephonic type).
- 5 compartments for coins, adjustable in width
- 4 compartments for banknotes, adjustable in width, with metal pieces to fix banknotes.
- Black colour
- Frontal slot for cash transactions when not paying in cash or using big banknotes.
- Lock in the frontal part of the box to be opened manually.
- Dimensions: 410x415x110 mm
- Packaging dimensions : 460x455x160mm
- Net weight: 7 kg
- Packaging weight: 8,4 kg.



| Code # | Description |
|--------|---------------------------|
| 910094 | Metal cash drawer box 410 |

*All the models from Baxtran retail scales with connection are compatible.