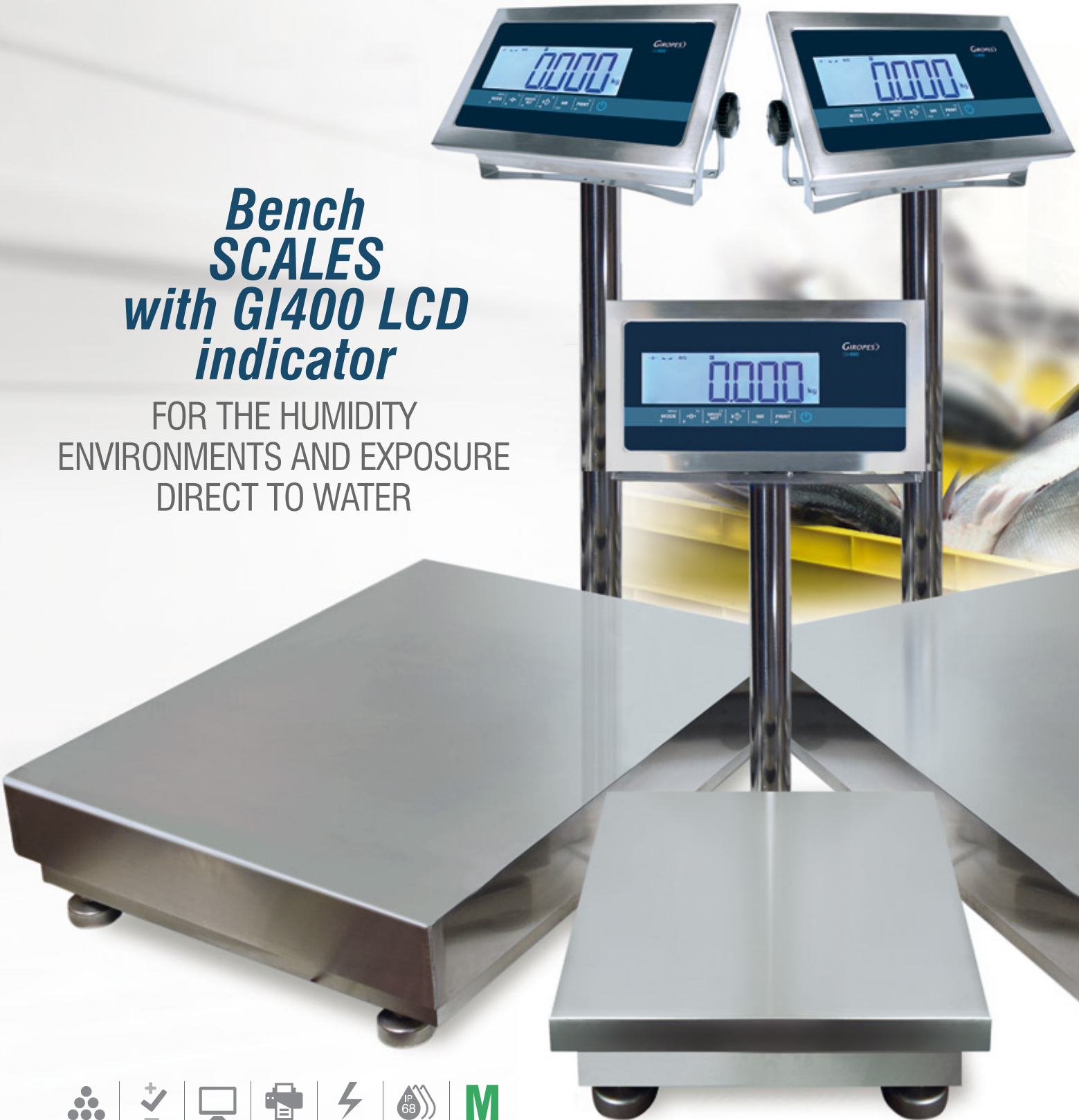


Bench SCALES with GI400 LCD indicator

FOR THE HUMIDITY
ENVIRONMENTS AND EXPOSURE
DIRECT TO WATER



Bench scale Indicator LCD

Bench scale set (plataform + column + indicator)

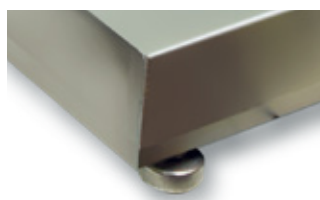


FEATURES:

- Bench platform + stainless steel column + GI400i LCD IP68 indicator.
- It can be used in legal metrology.
- Load cells with rehearse approval OIML R-60 C3.
- Adjustable feet in height.
- Tubular framework in stainless steel, sheet in stainless steel and load cell in stainless steel, IP68.
- LCD display with 6 digits of 40 mm.
- Power supply 230Vac.
- Unique range, multi-range or multi-interval.
- Units: kg.

FUNCTIONS:

- Weight accumulation: automatic/manual
- Totalization on screen
- Gross/Net
- Manual tare and pretare
- Back to zero
- Piece counting function
- Checkweigher with LCD signal
- Function division 1/10 verification. Display for a few seconds



Adjustable feet



Load cell in stainless steel IP68

Dimensions (mm)	h (min.)	h (max.)
305 x 335	127	140
420 x 550	140	155
500 x 650	185	195

TRG SCALES

#Code	Description	Capacity (kg)	Readout		Plat dimensions (mm)	Scale dimensions (mm)	VERIFIED # Code
			(g)	M(g)			
261214	TRG in stainless steel with digital indicator LCD	30	5	10	305 x 335	305 x 335 x 507	261220 M
261215	TRG in stainless steel with digital indicator LCD	60	10	20	305 x 335	305 x 335 x 507	261221 M
261216	TRG in stainless steel with digital indicator LCD	60	10	20	420 x 550	420 x 550 x 910	261222 M
261217	TRG in stainless steel with digital indicator LCD	150	20	50	420 x 550	420 x 550 x 910	261223 M
261218	TRG in stainless steel with digital indicator LCD	150	20	50	500 x 650	500 x 650 x 910	261224 M
261219	TRG in stainless steel with digital indicator LCD	300	50	100	500 x 650	500 x 650 x 910	261225 M